

NEWSLETTER

PHOENIX PARK & SEVENHILLS



A message from the Principal

Dear Students, Staff, and Families,

As we approach the festive season, I want to take a moment to express my sincere gratitude for your hard work, dedication, and resilience throughout this term.

Our school community is a special place, and I'm proud of the progress we've made together. We've faced challenges, but we've also celebrated successes, both big and small.

I hope this Christmas brings you joy, peace, and the opportunity to recharge. Remember, you are valued, and you are capable of great things.

Wishing you all a very Merry Christmas and a Happy New Year.



MRS JO INDIAN





CELEBRATIONS



PARK HOUSE

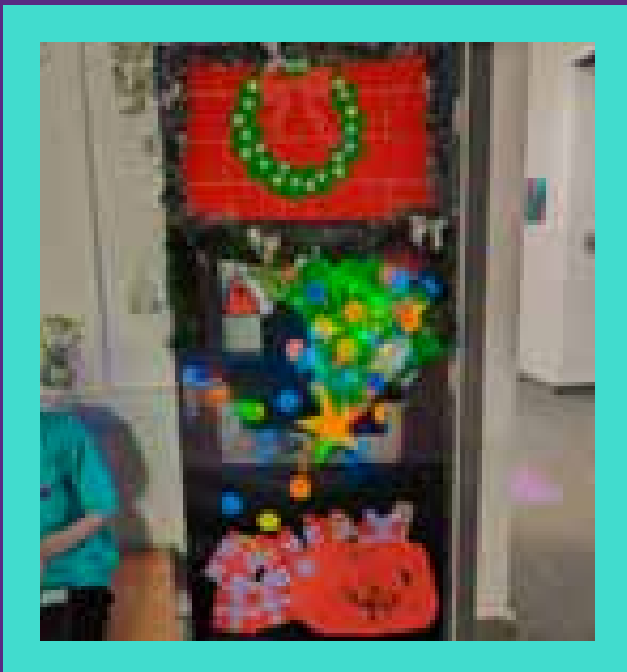
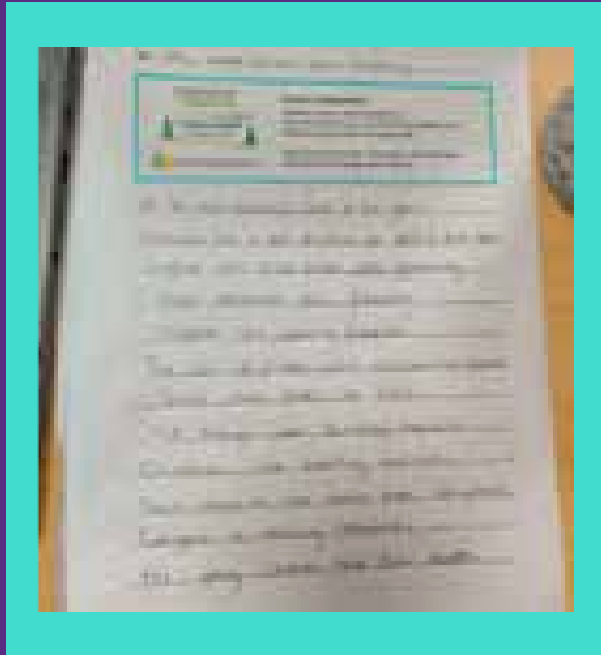
Empowering Environments



Park House has invested substantially to create a calm and nurturing environment that allows students and staff to create and maintain healthy relationships in a purposeful space. The transformational enhancement of a range of outdoor and indoor spaces has supported students' emotional regulation and individual educational needs.

Perhaps the most notable site development has been the outdoor space where students can now access a range of outdoor gym equipment, learn in the outdoor classroom or relax and connect with others in the amphitheatre.

The most recent addition to the external environment is a mural showcasing key landmarks in Cleethorpes and Grimsby with a Park House twist incorporating a student reading next to a fisherman. We are delighted with the new opportunities that have arisen from this project and students have taken great responsibility in keeping these spaces clean and tidy.





CELEBRATIONS



PARK HOUSE

At Phoenix Park, reading has become an embedded part of the curriculum timetable, with secure routines in place to allow for reading to take place every day. Engagement for reading has increased dramatically, with an average of 72% across Autumn 1, with this increasing further to 86% in Autumn 2!

JOHN MANSFIELD
HEAD OF CENTRE PARK HOUSE

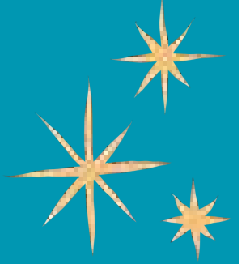




CELEBRATIONS

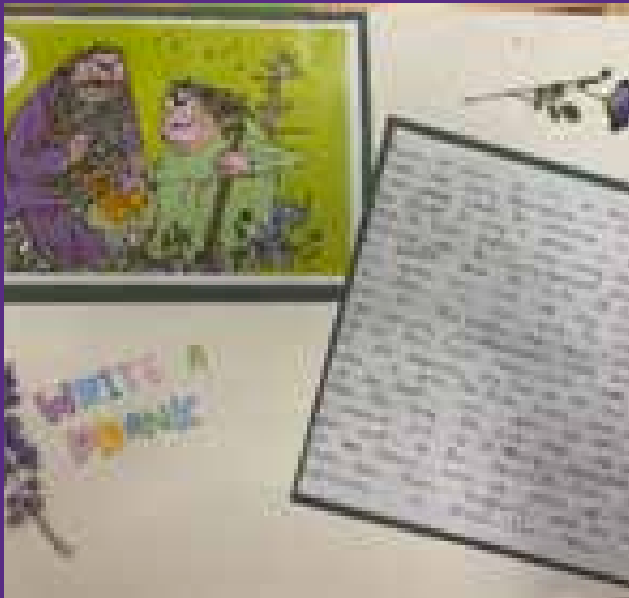


SEVENHILLS



At Sevenhills, students' engagement for reading has been outstanding! They have introduced a high expectation for reading, even completing extra sessions throughout the week. Students have continually achieved 100% engagement and have completed extra reads to support their reading journey. Targeted intervention through data analysis has had a positive impact in Autumn 2, with the lowest 20% of students receiving extra support to progress in this area further.

We have had some great reading initiatives this half term including a Roald Dahl day where students delved into the whimsical world of Roald Dahl to explore his writing techniques. We discussed how Roald managed to incorporate humour into his writing with classic characters such as 'The Twits'. Students were even given the opportunity to create some 'tricks' similar to those Mr and Mrs Twit played on each other in the book!



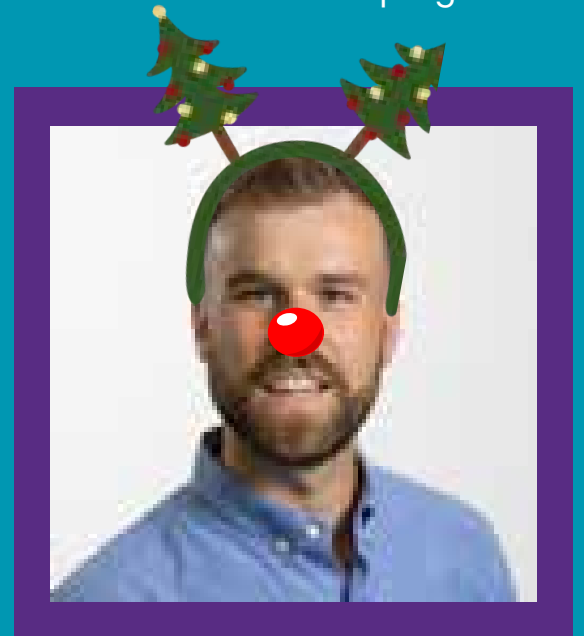
CELEBRATIONS



SEVENHILLS

Staff at Sevenhills have dedicated a great deal of time and effort to develop the KS3 English curriculum so that it meets the needs of learners whilst providing them with the necessary underpinning skills to make the transition to GCSE content. Summative assessments have been redesigned, all lessons are resourced to take into account our core teaching and learning expectation of 'I Do, We Do, You Do', and planning has been adapted to include a thematic half-termly focus with clear links to relevant texts and extracts. The impact of the work undertaken is clear to see: during the Autumn term, every student at Sevenhills made progress in English.

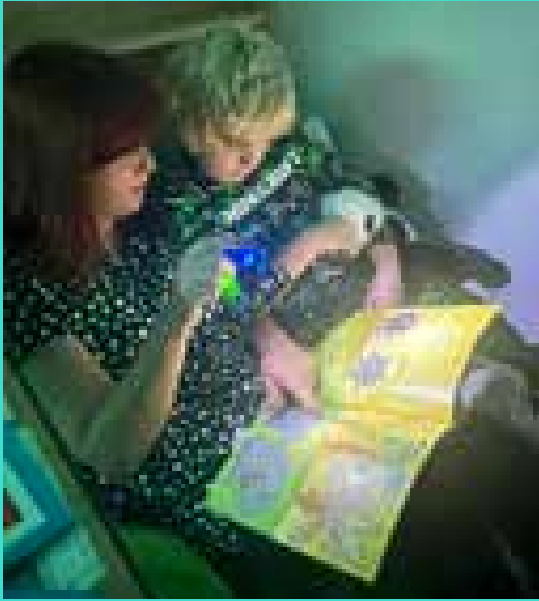
Last half term, a former Sevenhills and Phoenix Park Academy student visited the site to check in with staff. She was overcome with emotion at all of the familiar faces who came through to reception to speak with her. This particular individual did not always find school the easiest, but developed meaningful relationships within our settings which have followed her through to adult life. It was fantastic to hear that, through studying Animal Care at a local college, she has now set up her own dog grooming business, which is going from strength to strength. To say we are proud would be understatement.



TOM HARDY
HEAD OF CENTRE SEVENHILL



CELEBRATIONS



PHOENIX HOUSE

In Key Stage 2 at Phoenix House, the development of phonics has been a focus for staff who support our youngest readers. Our students have all made progress in their phonics assessments from their baseline tests at the start of Autumn 1 and are continuing to improve. Across our site, Reading Plus engagement is high, with 78% of learners engaging with reading every day in Autumn 1 with this improving to 89% in Autumn 2!

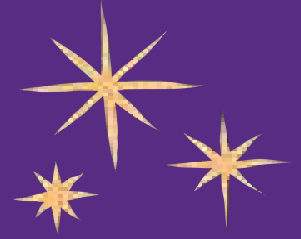


Phoenix House have had some engaging Reading events, with them running the ever popular 'Reading In The Dark' event parents and students. This afternoon was well attended, with children reading to their parent or guardian their favourite story.





CELEBRATIONS



PHOENIX HOUSE

Our Key Stage 2 students visited a Care Home in the local area to read out loud to the RESIDENTS. Students from Tokyo class took their favourite books and sat with the residents to proudly read to them and discuss with them what they had read. The reading event was that successful, there are follow up visits planned for the new year to continue the link with them.



NEAL WATTS
HEAD OF CENTRE PHOENIX HOUSE





CELEBRATIONS



FOUNDATION PATHWAY

Foundation Pathway across Phoenix Park and Sevenhills has been a huge piece of work, encompassing different staff and skill sets to reach a common goal. In its infancy, FPW was set up to support students who persistently showed violent behaviour, poor relationships or heightened anxieties around school attendance. With such a broad spectrum of issues, staff and leaders needed to create a dynamic, robust and child centred curriculum that would look to support our students to their next steps. We initiated a 16 week, wave 3 intervention step out for our students, with the express directive of reintegration and skill support. This meant creating bespoke opportunities for each of them, limiting their time on site to start with and more importantly, meeting them where they are. We commissioned minibuses to take the learning to our students and staffed them with outdoor specialists to change their perspective. In year 1, we had great success and managed to reintegrate 8 of our 12 learners to site for their education, got 2 students EHCP placements and returned 1 to mainstream.





CELEBRATIONS



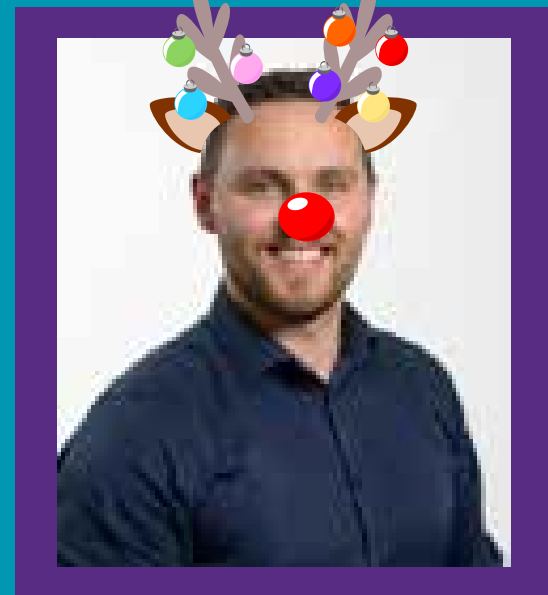
FOUNDATION PATHWAY

Foundation Pathway have been busy delivering Christmas to local schools, nurseries and charities this half term. In collaboration with East Marsh Community CiC and Mission Christmas, we have successfully organised, collected and delivered close to 2000 presents to schools who have families who may need support. The team have worked tirelessly to support, often in wonderful fancy dress! We have had some great replies and words of thanks too! Merry Christmas!

Following Mission Christmas we received the below message from Doorstep.

'On behalf of all the young people who use our services, we wanted to say a huge "Thank You" for your recent donation of children's toys. They are absolutely wonderful and will make a much needed addition to our Christmas Hampers, which we distribute to all our young families over the next week.'

SENDING OUR VERY BEST WISHES TO YOU ALL FOR 2025.'

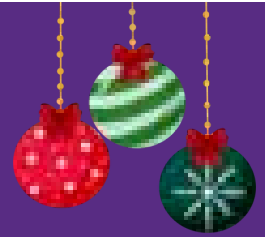


STEVE COOPER
ASSISTANT PRINCIPAL





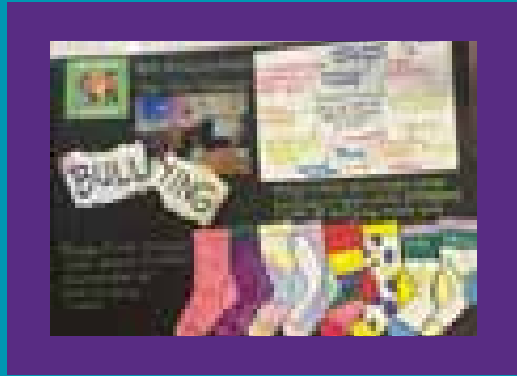
CELEBRATIONS



SEND

This year saw a revamp of the SEMH support for all students within Phoenix Park and Sevenhills. SEMH continues to be at the centre of everything we do throughout the academies and the changes further compliment the offer we're already proud to share. The changes this year have had a positive impact already on student progress but more importantly, on the SEMH culture across the schools.

Although we follow the same curriculum as previous years, which is based on the SEMH Positive Outcomes Toolkit used throughout North East Lincolnshire, it's now been adjusted to give more ownership to classroom staff in terms of what area(s) they focus on, following the enquiry assessment. Afterall, the classroom staff are the subject matter experts and know their students the best and what their areas of needs are.



To further support the SEMH needs of students requiring the most support, we have also fine tuned out SEMH Interventions. These interventions now include - Lego Based Therapy, W.R.A.P and most recently, Thrive.

70% of all students making progress from their baseline SEMH score of the 91 areas of focus set across the academies, 63% saw progress.

100% students at Phoenix and Sevenhills students have received Wave 2 Interventions.



ELLIE PHILLIPS
EXECUTIVE SENDCO

ASH LUCAS
LEADER OF BEHAVIOUR
& CULTURE

Follow us 



@PHOENIXPARK_
@PHOENIXHOUSEPRU
@SEVENHILLS__





USEFUL SUPPORT



HAF PROGRAMME

The Holiday Activities and Food programme (HAF) provides healthy food and enriching activities to children in receipt of free school meals.

The aim of the programme is to make free places available to 5 to 16 year old children in the area who are eligible for and receive benefits-related free school meals (the equivalent of at least four hours a day, four days a week and for six weeks a year).

[TTPS://WWW.NELINCS.GOV.UK/CHILDREN-FAMILIES-AND-SCHOOLS/HOLIDAY-ACTIVITIES-AND-FOOD/](https://www.nelincs.gov.uk/children-families-and-schools/holiday-activities-and-food/)

USEFUL LINKS

[HTTPS://WWW.REHAB4ADDICTION.CO.UK/COUNTRY-WIDE/DRUG-ALCOHOL-REHAB-GRIMSBY](https://www.rehab4addiction.co.uk/country-wide/drug-alcohol-rehab-grimsby)

[HTTPS://LIVEWELL.NELINCS.GOV.UK/ADULT-SOCIAL-CARE/CARERS-PORTAL/PARENT-CARERS/](https://livewell.nelincs.gov.uk/adult-social-care/carers-portal/parent-carers/)

[HTTPS://WWW.NELINCS.GOV.UK/FIS/?CATEGORY=COMMUNITY+GROUPS+FOOD+BANKS](https://www.nelincs.gov.uk/fis/?category=community+groups+food+banks)

[HTTPS://MONEYSAVINGCENTRAL.CO.UK/KIDS-EAT-FREE](https://moneysavingcentral.co.uk/kids-eat-free)

[HTTPS://WWW.SAFERNEL.CO.UK/FAMILY-PARENT-AND-CARER-SUPPORT/PREVENTION-AND-EARLY-HELP](https://www.safernel.co.uk/family-parent-and-carer-support/prevention-and-early-help)

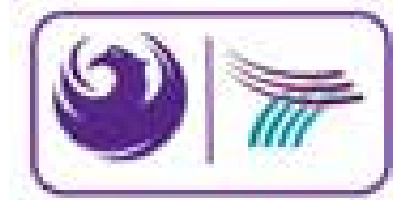
[FAMILY HUBS](#)



HAVE A LOVELY CHRISTMAS!



We are committed to working closely with parents and carers to support our students' progress. Your involvement is invaluable in helping them reach their full potential.



We wish you all a happy and restful Christmas break. Our academies look forward to welcoming our students back in on Tuesday 7th January.

HO-HO-HO!



TERM DATES

	Academy Opens	Academy Closes
Autumn term 1	Wednesday 4th September 2024	Friday 18th October 2024
Autumn term 2	Monday 4th November 2024	Friday 20th December 2024
Spring term 1	Tuesday 7th January 2025	Thursday 13th February 2025
Spring term 2	Monday 24th February 2025	Friday 4th April 2025
Summer term 1	Tuesday 22nd April 2025	Friday 23rd May 2025
Summer term 2	Monday 2nd June 2025	Thursday 24th July 2025

PHOENIX

PHOENIX PARK ACADEMY,
HAROLD STREET, GRIMSBY, NORTH
EAST LINCOLNSHIRE, DN32 7NQ.

T: 01472 351412
E: PHOENIXPARK@PPASEV.ORG.UK

PARK

PHOENIX PARK ACADEMY, PARK
AVENUE, GRIMSBY, NORTH EAST
LINCOLNSHIRE, DN32 0BZ.

T: 01472 483211
E: PHOENIXPARK@PPASEV.ORG.UK

SEVENHILLS

SEVENHILLS ACADEMY, SECOND
AVENUE, GRIMSBY, NORTH EAST
LINCOLNSHIRE, DN33 1NU.

T: 01472 322079.
E: SEVENHILLS@PPASEV.ORG.UK

